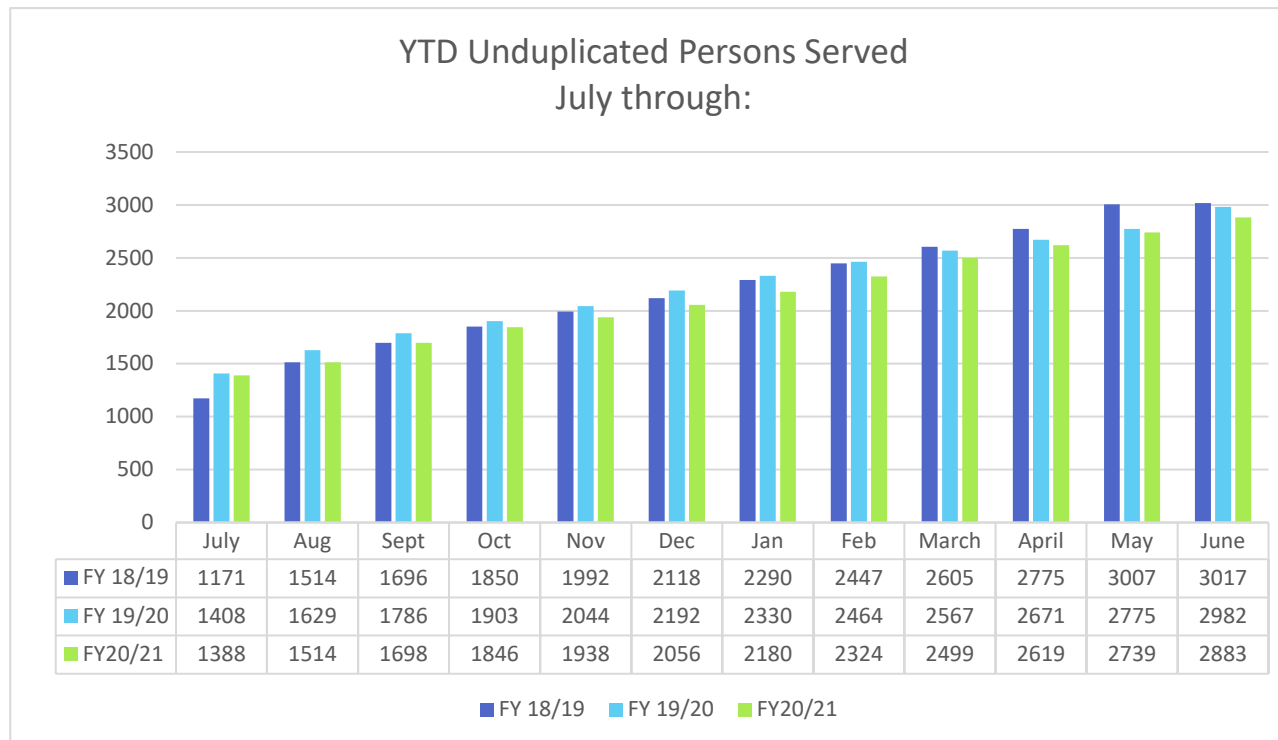
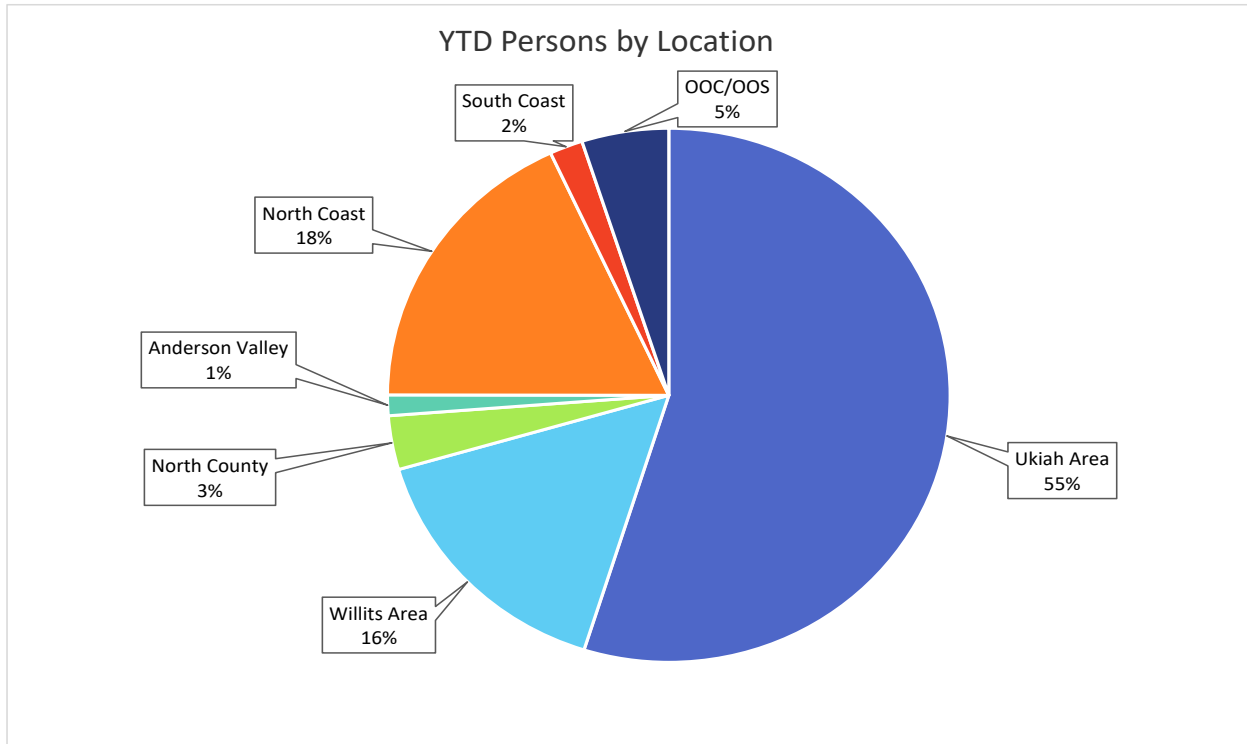


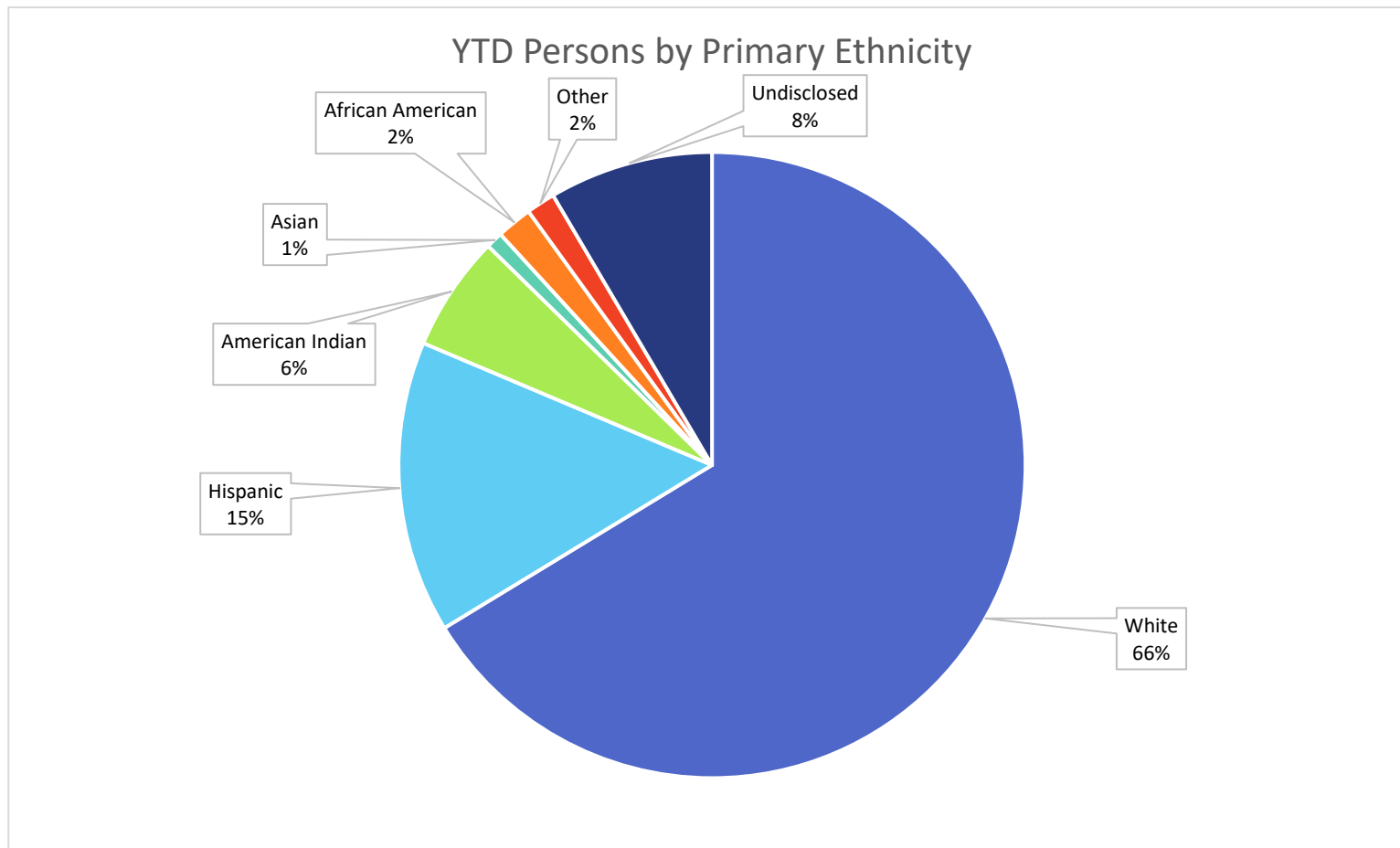


2020/2021 Trends and Year to Year Comparison



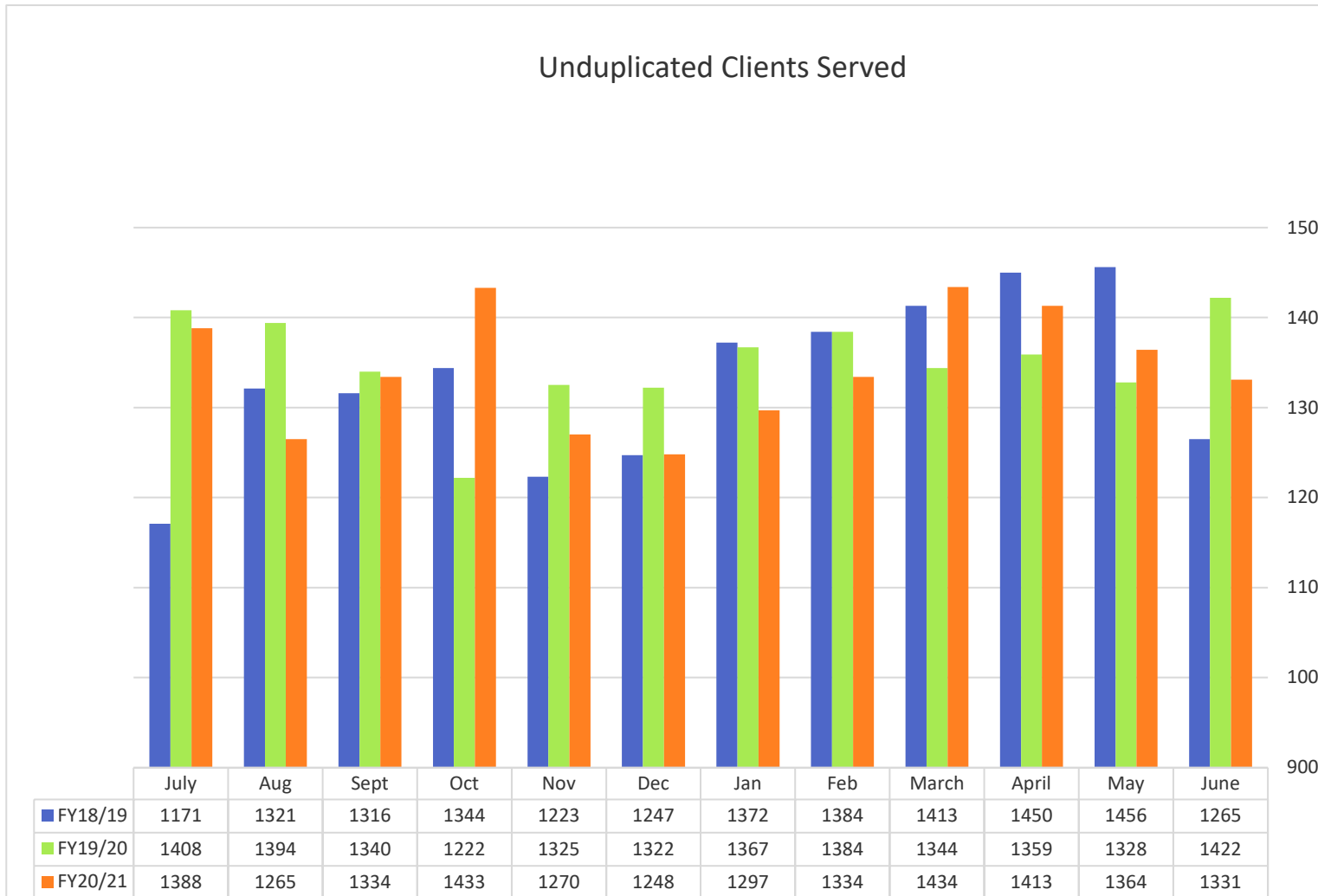


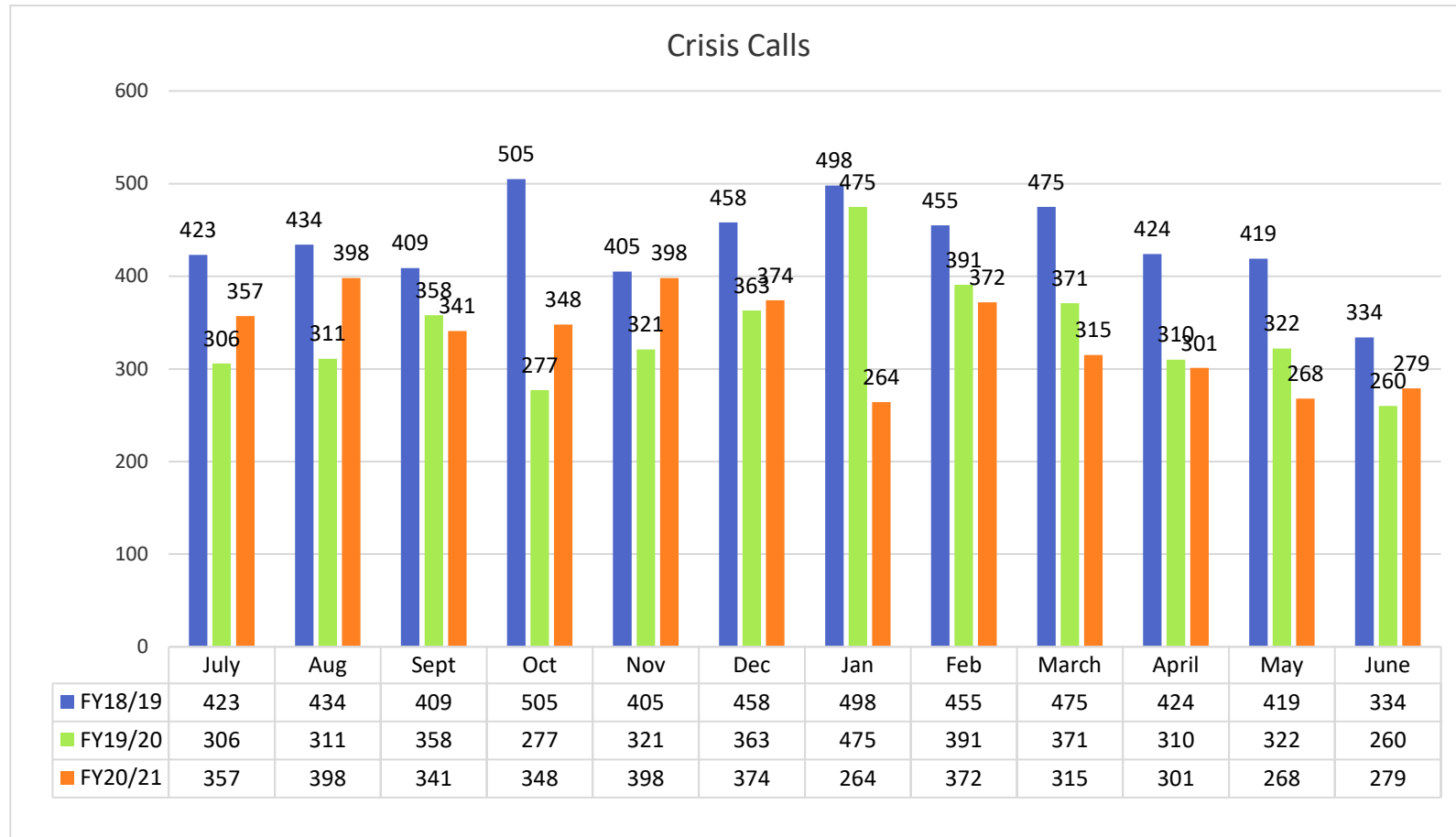
YTD Persons by location...	Count	%
Ukiah Area	1582	55%
Willits Area	451	16%
North County	94	3%
Anderson Valley	36	1%
North Coast	521	18%
South Coast	55	2%
OOC/OOS	144	5%

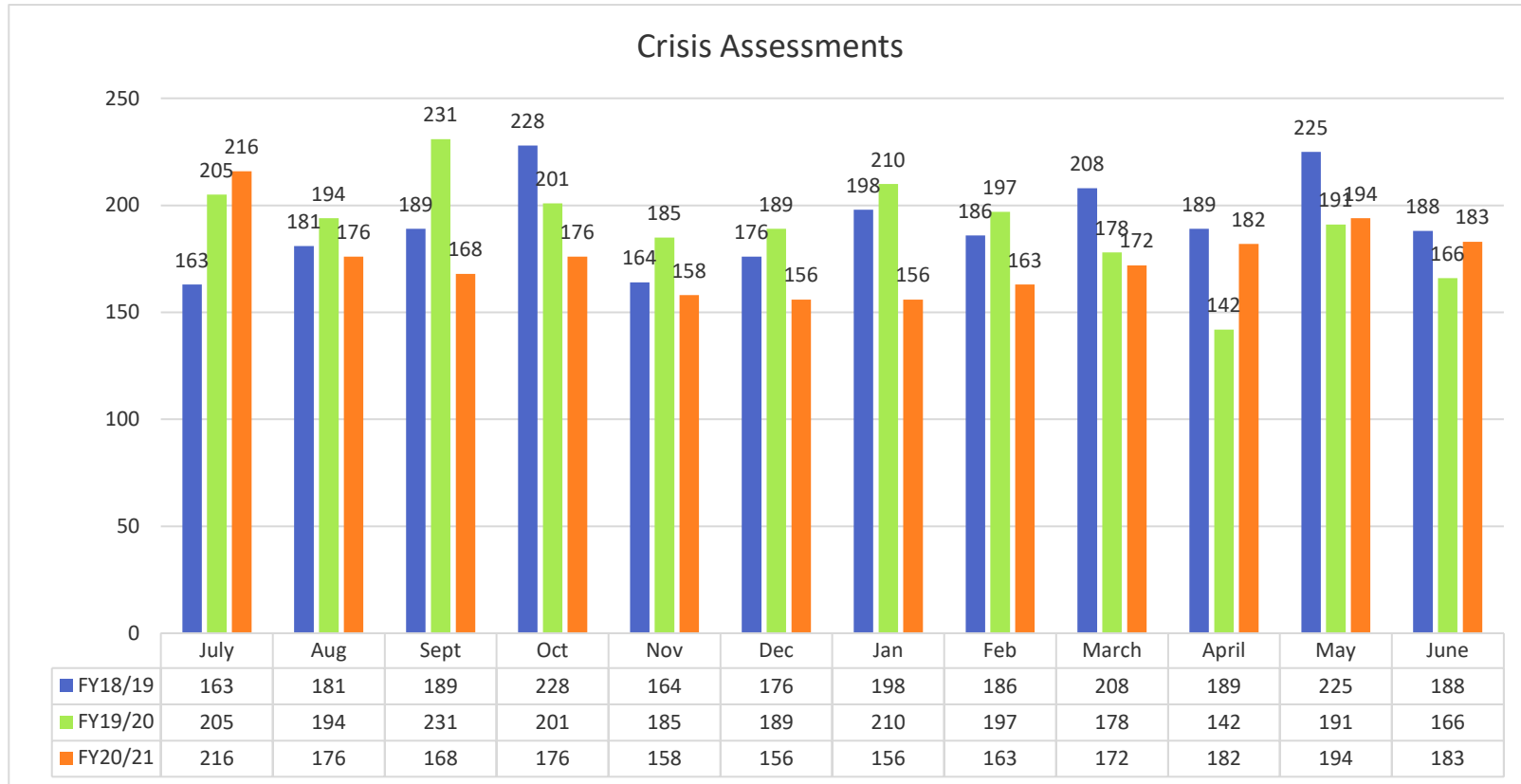


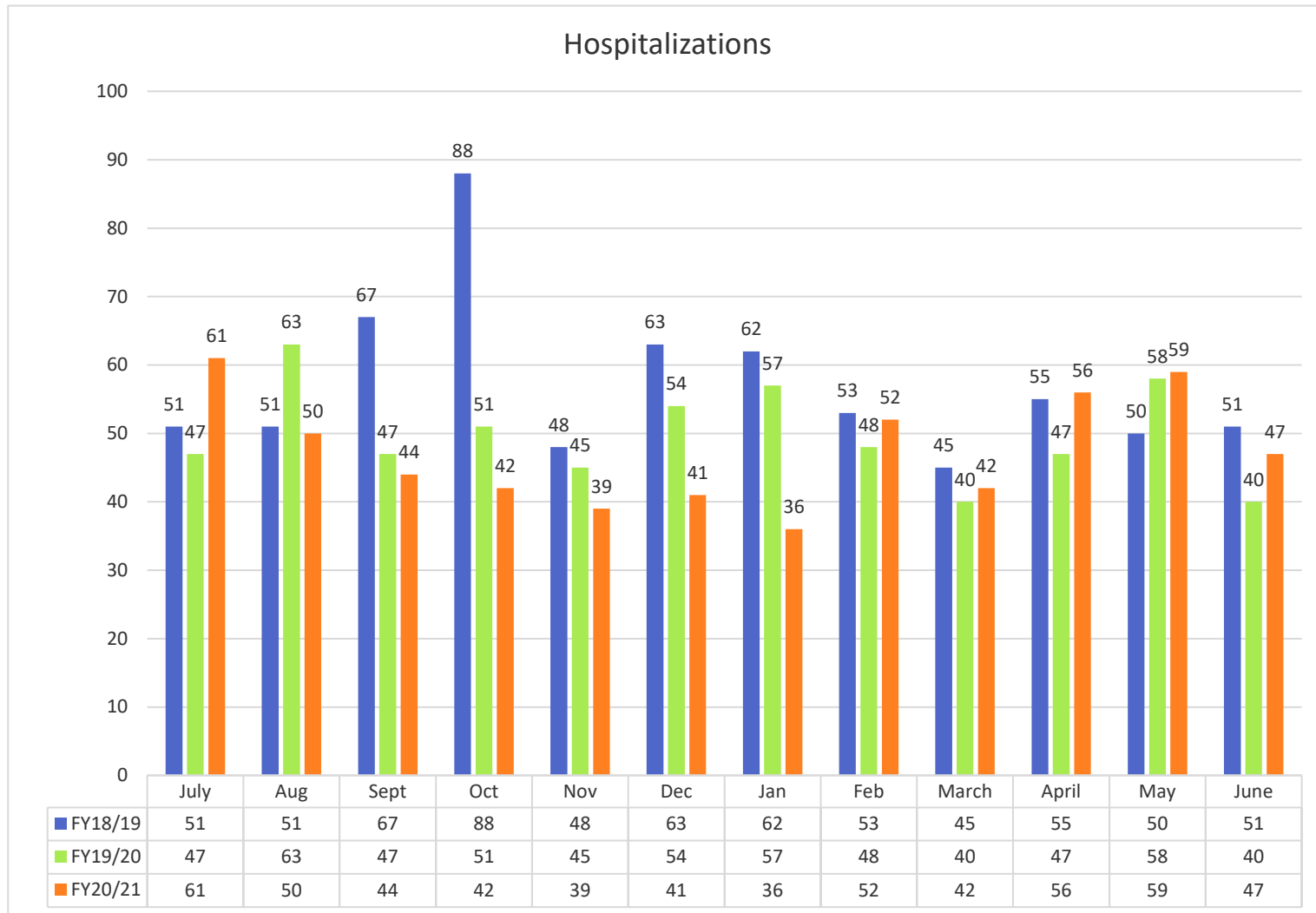


Unduplicated Clients Served



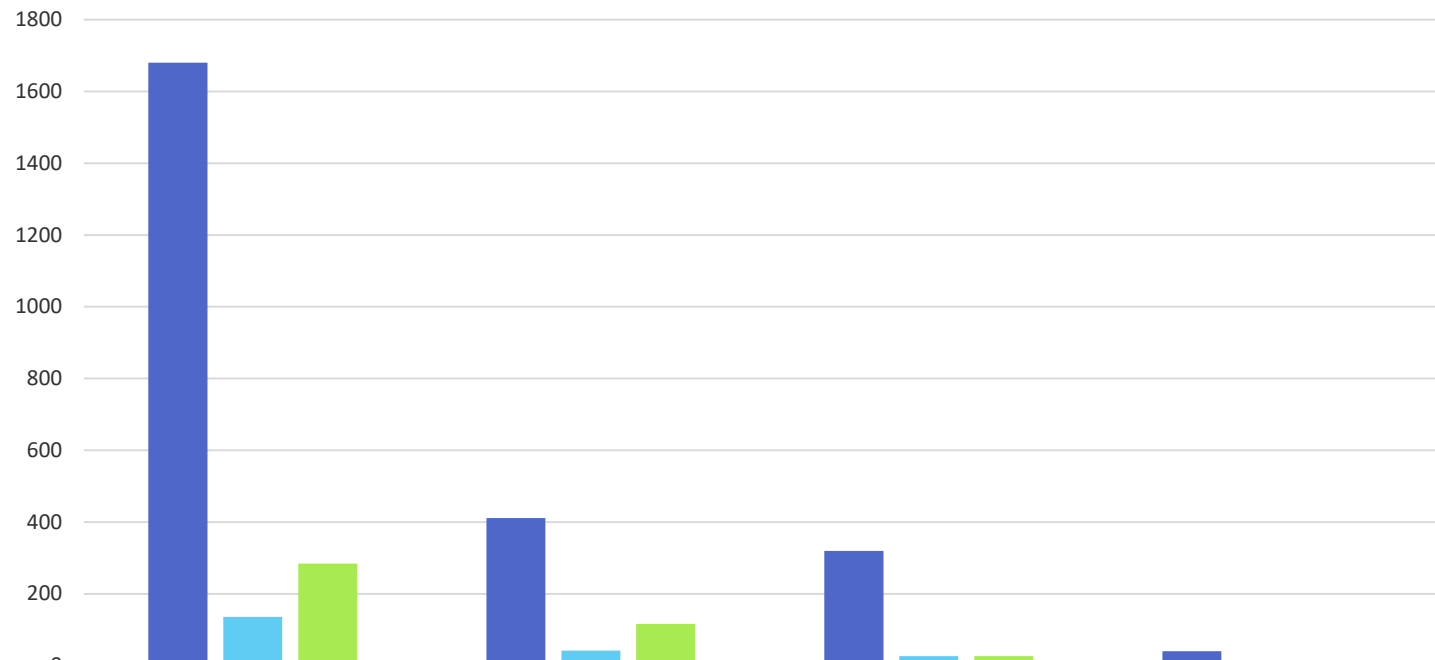








YTD Crisis by Payor



	Crisis Assessments	Hospitalizations	Discharged to Mendo: follow-up appt	Discharged to Mendo: declined follow up
■ Mendo Medi-Cal beneficiary	1680	411	320	40
■ Indigent	136	42	26	7
■ All Other Payors	284	116	26	13

